

STA. 10+00.00
S COR. SEC 15, T-4-S, R-2-W
FOUND BLM MONUMENT 6" DEEP

- (1) FOUND W. FACE 6" IRON POST 56.91' AT S 78°28'16" E
- (2) FOUND PK W/ SHINER IN S. FACE 16" TREE 28.60' AT N 11°08'34" W
- (3) FOUND 60D NAIL 23.25' AT N 03°17'37" W
N: 316614.2360 E: 2151150.5901

SEC. 22, T-4-S, R-2-W

CURVE NO. 2
CRL NS 315
P.I. STA. 123+53.95
R = 465.000'
T = 143.101'
Δ = 34°12'39"
L = 277.648'
C = 273.542'
eMAX = 8%
V = 45 MPH

P.O.T. STA 20+00.00
CL OF SURVEY
SET 5/8" IRON PIN
3" DEEP

P.O.T. STA 30+00.00
CL OF SURVEY
SET 5/8" IRON PIN
3" DEEP

BENCHMARK DESCRIPTIONS

- BM 201 STA. 21+65.75 49.28' LT. SET RR SPIKE S FACE 24" TREE ELEV. 840.14
- BM 202 STA. 25+62.77 76.73' LT. SET 5/8" IRON PIN ELEV. 837.04
- BM 203 STA. 29+49.14 177.81' LT. SET RR SPIKE S FACE 10" TREE ELEV. 837.36
- BM 204 STA. 32+71.82 192.65' LT. SET RR SPIKE S FACE 12" TREE ELEV. 840.63
- BM 205 STA. 123+65.09 167.58' LT. SET RR SPIKE E FACE 36" DBL TRUNK ELEV. 837.69
- BM 206 STA. 128+49.17 49.12' LT. SET RR SPIKE N FACE PP ELEV. 848.63
- BM 207 STA. 132+09.73 36.41' RT. SET 5/8" IRON PIN FLUSH ELEV. 870.77
- BM 208 STA. 136+11.22 37.76' RT. SET RR SPIKE W FACE PP ELEV. 880.87
- BM 209 STA. 139+97.28 4.92' LT. SET 5/8" IRON PIN FLUSH ELEV. 869.09
- BM 210 STA. 142+77.57 34.27' RT. SET RR SPIKE W FACE PP ELEV. 864.04

CURVE NO. 4
EW 194 CRL
P.I. STA. 35+06.79
R = 110.000'
T = 18.494'
Δ = 19°05'15"
L = 36.645'
C = 36.476'
D = 52°05'13"

SEC. 15, T-4-S, R-2-W

STA 116+50.00
BEGIN J/P 28448(04)
21.07' RT. NS-315 CL SURVEY
N: 315642.3774
E: 2153826.3907

CURVE NO. 1
CRL NS 315
P.I. STA. 119+21.79
R = 465.000'
T = 99.175'
Δ = 24°04'45"
L = 195.421'
C = 193.986'
D = 12°19'18"
eMAX = 8%
V = 45 MPH

CURVE NO. 3
CRL NS 315
P.I. STA. 134+24.38
R = 465.000'
T = 39.815'
Δ = 9°47'16"
L = 79.436'
C = 79.340'
D = 12°19'18"
eMAX = 8%
V = 45 MPH

STA 137+00.00
END J/P 28448(04)
= STA 136+57.11 13.37 RT.
NS-315 CL SURVEY
N: 317649.2409
E: 2153800.3141

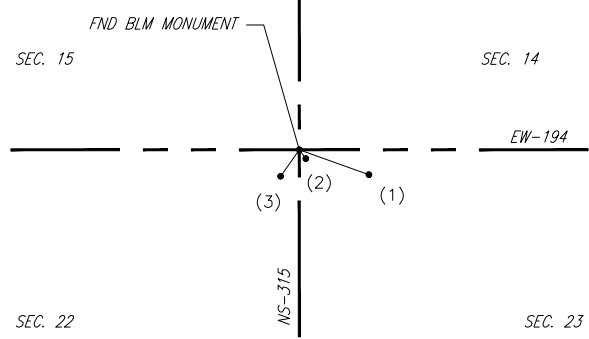
SEC. 23, T-4-S, R-2-W

SEC. 14, T-4-S, R-2-W



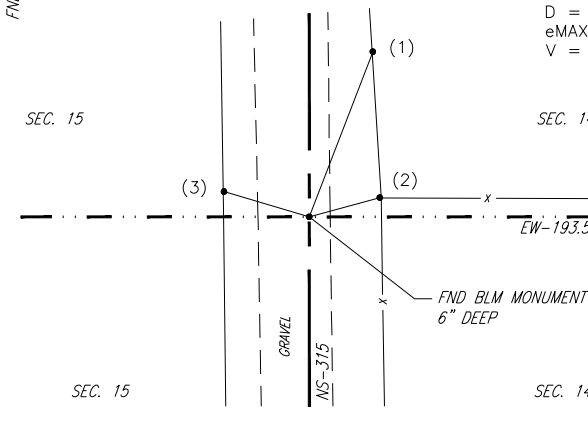
STA. 100+00.00
E COR. SEC 22, T-4-S, R-2-W
FOUND 3/8" IRON PIN W/ 1378 CAP

- (1) FOUND SW FACE 4" STEEL BRACE POST 50.22' AT N 39°40'35" E
- (2) FOUND SW FACE 6" STEEL CORNER POST 25.76' AT S 79°55'15" E
- (3) FOUND SE FACE 3" STEEL CORNER POST 14.62' AT N 52°07'48" W
N: 313992.2437 E: 2153824.7741



STA. 126+41.78
SE COR. SEC 15, T-4-S, R-2-W
FOUND BLM MONUMENT

- (1) FOUND 60D NAIL W FACE 8" TREE 19.25' AT S 70°13'40" E
- (2) FOUND PK W/ SHINER IN W. FACE 10" DBL TREE 2.85' AT S 36°12'23" E
- (3) FOUND PK W/ SHINER IN N. FACE 10" DBL TREE 8.45' AT S 35°14'48" W
N: 3166338360 E: 2153793.6301



STA. 152+84.76
E COR. SEC 15, T-4-S, R-2-W
FOUND BLM MONUMENT 6" DEEP

- (1) FOUND PK W/ SHINER IN S. FACE TREE 46.05' AT N 21°06'17" E
- (2) FOUND W. FACE 6" STEEL CORNER POST 19.05' AT N 74°55'33" E
- (3) FOUND E. FACE 2" STEEL FENCE POST 23.12' AT N 73°37'30" W
N: 319276.7596 E: 2153775.2897



WALNUT CREEK CARTER COUNTY

ALIGNMENT DATA SHEET

JOB PIECE NO. 28448(04) SHEET NO. R007